

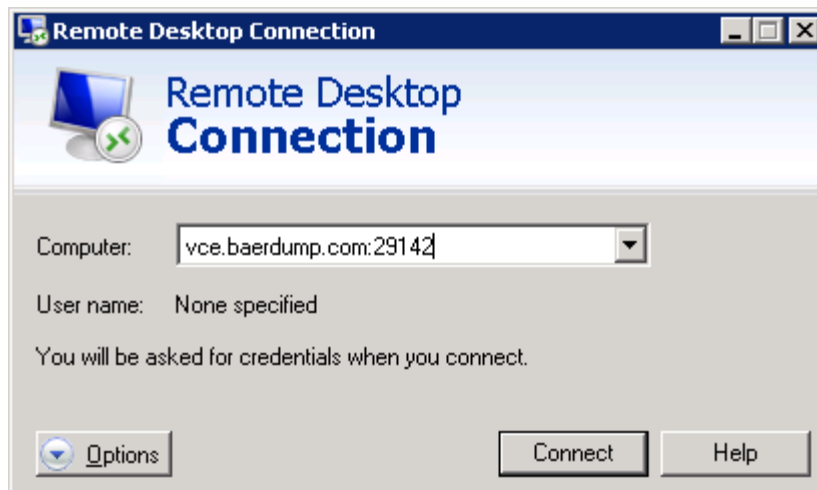
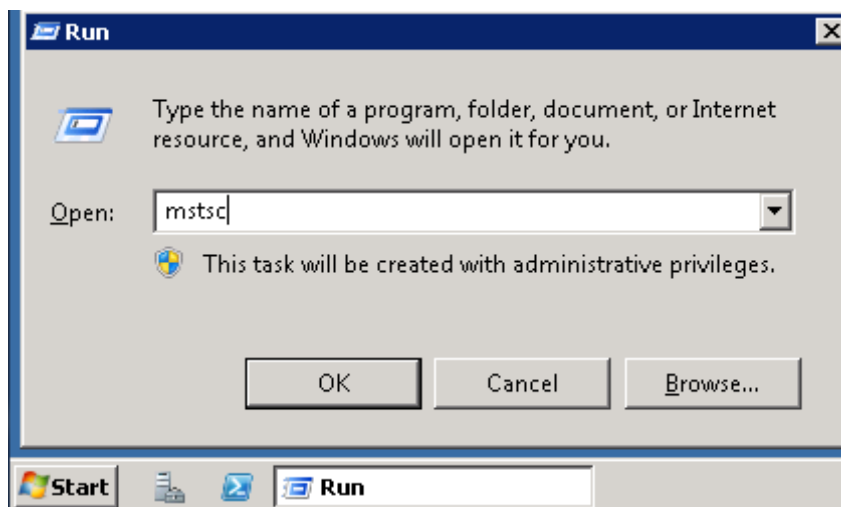
# BAERLAB International IT Training Base

## Remote Server

### 1. Use “Remote Desktop Connection” to login into BAER Internal Server (SERVER2012-ENG):

Domain name: **vce.baerdump.com:29142**

Username: **[your name]** Password: **Baer@2001**



### 2. Use “Google Chrome” to access the following devices:

Only the following servers and permissions are allowed now, more resources will be provided later.

## BAER Remote Servers

IP Address	Name	Note	Username	Password
192.168.88.2-100	—	For students	—	—
192.168.88.202	Winsever2008	[Physical]	[your name]	Baer@2001
192.168.88.220	EVE-NG	[Physical]	[your name]	Baer@2001
192.168.88.207	CISCO-ISE2.6	[Physical]	user[read only]	Baer@2020
192.168.88.208	CISCO-ACS	[Physical]	user[read only]	Baer@2020
192.168.88.209	CISCO-ISE2.4	[EVE]	admin	by yourself
192.168.88.210	CISCO-ASAv-1	[EVE]	—	None
192.168.88.211	CISCO-ASAv-2	[EVE]	—	None
by yourself	Win-10-ENG	[EVE]	user	Test123
by yourself	Winsever2012	[EVE]	administrator	Test123
192.168.88.253	CISCO-DNAC	[Physical]	[your name]	Baer@2001
192.168.2.2	SW3550	[Physical]	cisco	cisco